

Description

This is an ebike controller for ebike which can drive the wide range of BLDC motors with Square wave or Sine wave or FOC mode , low power consumption design, smooth current flow technology, Auto motor position correct ,auto real-time speed trace ,drive ebike motor with High efficiency and low noise;
We provided some special APPs for some advance applications , user can reprogram new software to controller or update firmware by these APP tools

Specification

Voltage :	24-72V
Current:	10-50A
Mode:	Square /Sine wave / FOC
Interface:	Motor, PAS, Display , Brake Throttle, Torque sensor
	Light power, Gear Sensor etc.
• Communication:	UART /RS232/CAN
• Case Material:	Aluminum
• Size:	86x31x52(mm) (6 pcs Mofset)
	116x31x52(mm) (12 pcs Mofset)
Net Weight:	215(g)
Customization:	Variable

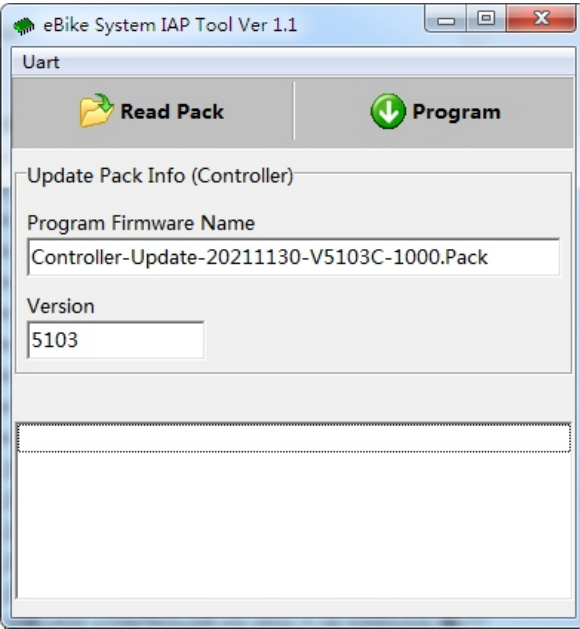
How to order

Items below must be declared clearly before order.

- Motor Technology Parameters
- Batter Voltage & Max Current
- Interface & Cable length
- Other special requirements

IAP Tool

If user has some special applications or some special bikes .and the standard software inside controller can not meet your requirements .
We can provide customization for you , you can reprogram controller by this APP when you got new software update pack from us



Firmware Tool

Firmware is a parameters pack file related with a certain bike, it was stored in controller memory. Firmware was combined with all settings related with battery , motor , riding mode , sensors etc.
User can load new firmware from us to controller memory by this APP

