

● Description

This is a centre control panel with a TFT colorful screen for ebike drive system, transparent silicon rubber button with LED back-light, GUI interface, digital communicating interface. 3 font color solution and 3 colorful skins are presented, a built-in light sensor and auto adjust the screen back light, and power on or off the light according to ambient intensity;

Those informations such as Speed, Battery Voltage, Current, ODO, TRIP, Status of accessories etc. can be show on the screen with different color;

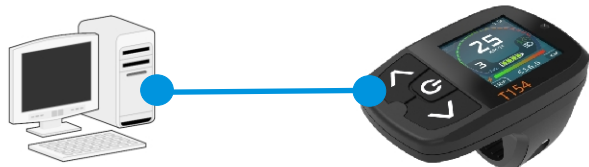
Plenty setting menu items are available for users to set the parameters for different application. for different Drive system or different requirements.

● Specification

Mode	: T-154-1
Screen	: 1.54" TFT
Button	: Sillicon(Red/Blue Backlight)
Power	: 15-60VDC/10mA
Communication	: UART/RS232/CAN
Housing Material	: ABS+PC
Weight	: 58(g)
Customization	: Valibale

● Debug APP

Some settings related with display such as password, fix position of display, skin& font coloretc. can be changed by this APP



● Colorful Picture Load APP

There have 2 default pictures can be shown when display power-on or off, User can load some personalized pictures to replace these original pictures by this APP



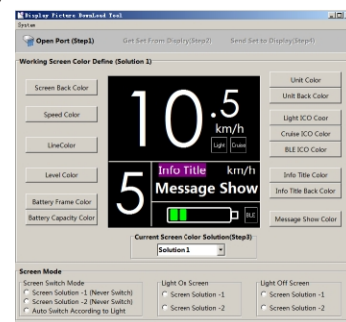
● How to Fix

Display can be fixed at either Left or right side of handbar, please change the correct FIX POSITION menu item value after fixed



● Screen& Font Color APP

The color of each item such as speed, level, battery indicator, trip etc. can be redefined by this APP, user can preset 3 color solutions by this APP



● How to order

Items below must be declared clearly before order.

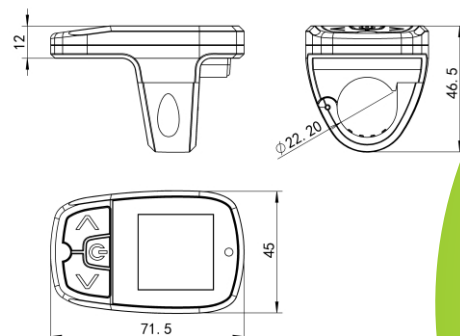
- Voltage / Cable length/Connector type
- Others

● Description

This is a centre control panel with a TFT colorful screen for ebike drive system, transparent silicon rubber button with LED back-light, GUI interface, digital communicating interface. 3 font color solution and 3 colorful skins are presented, a built-in light sensor and auto adjust the screen back light, and power on or off the light according to ambient intensity;

Those informations such as Speed, Battery Voltage, Current, ODO, TRIP, Status of accessories etc. can be show on the screen with different color;

Plenty setting menu items are available for users to set the parameters for different application. for different Drive system or different requirements.

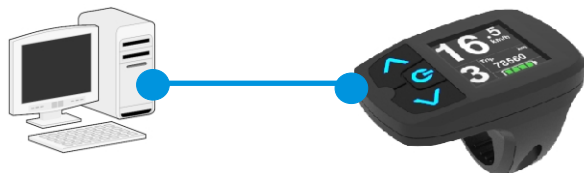


● Specification

Mode	: T-154
Screen	: 1.54" TFT
Button	: Sillicon(Red/Blue Backlight)
Power	: 15-60VDC/10mA
Communication	: UART/RS232/CAN
BlueTeech	: Valid
Housing Material	: ABS+PC
Weight	: 58(g)
Customization	: Valibale

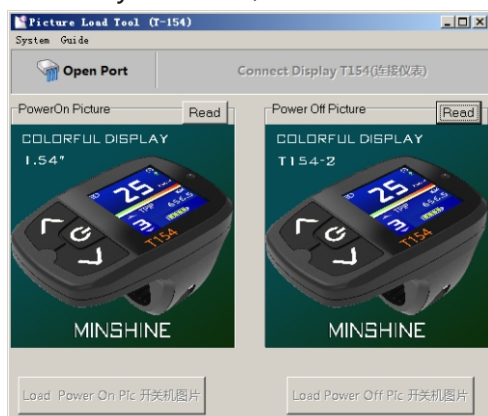
● Debug APP

Some settings related with display such as password, fix position of display, skin& font color etc. can be changed by this APP,



● Colorful Picture Load APP

There have 2 default pictures can be shown when display power-on or power-off, User can load some personalized pictures to replace these original pictures by this APP;



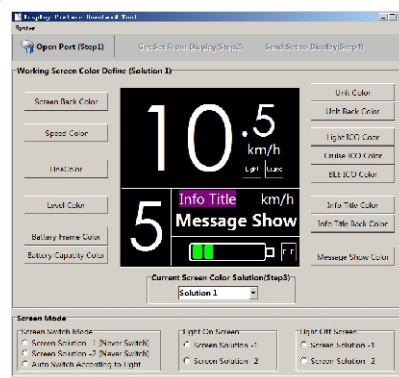
● How to Fix

Display can be fixed at either Left or right side of handbar, please change the correct FIX POSITION menu item value after fixed



● Screen& Font Color APP

The color of each item such as speed, level, battery indicator, trip etc. can be redefined by this APP



● How to order

Items below must be declared clearly before order.

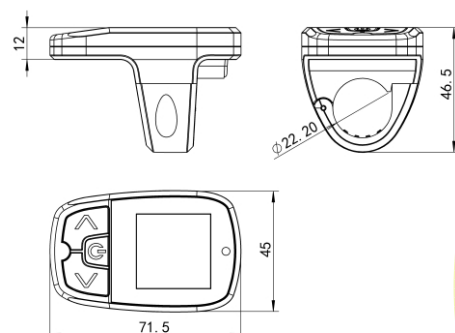
- Voltage / Cable length/Connector type
- Others

Description

This is a centre control panel with a TFT colorful screen for ebike drive system, transparent silicon rubber button with LED back-light, GUI interface, digital communicating interface. 3 font color solution and 3 colorful skins are presented, a built-in light sensor and auto adjust the screen back light, and power on or off the light according to ambient intensity;

Those informations such as Speed, Battery Voltage, Current, ODO, TRIP, Status of accessories etc. can be show on the screen with different color;

Plenty setting menu items are available for users to set the parameters for different application. for different Drive system or different requirements.

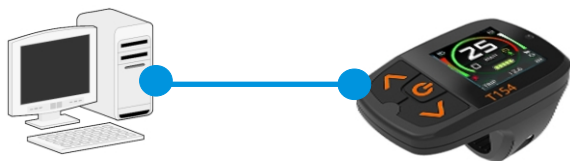


Specification

Mode	: T-154-3
Screen	: 1.54" TFT
Button	: Sillicon(Red/Blue Backlight)
Power	: 15-60VDC/10mA
Communication	: UART/RS232/CAN
Housing Material	: ABS+PC
Weight	: 58(g)
Customization	: Valibale

Debug APP

Some settings related with display such as password, fix position of display, skin color etc. can be changed by this APP,



Colorful Picture Load APP

There have 2 default pictures can be shown when display power-on or power-off, User can load some personalized pcitures to replace these original pictures by this APP;



How to Fix

Display can be fixed at either Left or right side of handbar, please change the correct FIX POSITION menu item value after fixed



Screen & Font Color APP

The color of each item such as speed, level, battery indicator, trip etc. can be redefined by this APP



How to order

Items below must be declared clearly before order.

- Voltage / Cable length/Connector type
- Others